



# FOR LEASE

## 10395 Old Placerville Road Sacramento



**±4,912 Square Feet Available**



### Project Highlights:

- Availability: Suite 200 - ±4,912 Square Feet
- Asking Rate: \$1.25 per Square Foot, Fully Serviced
- Ample Parking for Tenant and Visitors
- Ready for Immediate Occupancy
- Building Set in a Campus Environment Surrounded by Lush and Mature Landscaping
- Convenient Access to Highway 50

### Contact Exclusive Agents

#### Breanna Hegseth, LEED AP

bhegseth@ccarey.com  
916.569.2341  
Lic. # 01760300

#### Craig Brintzer

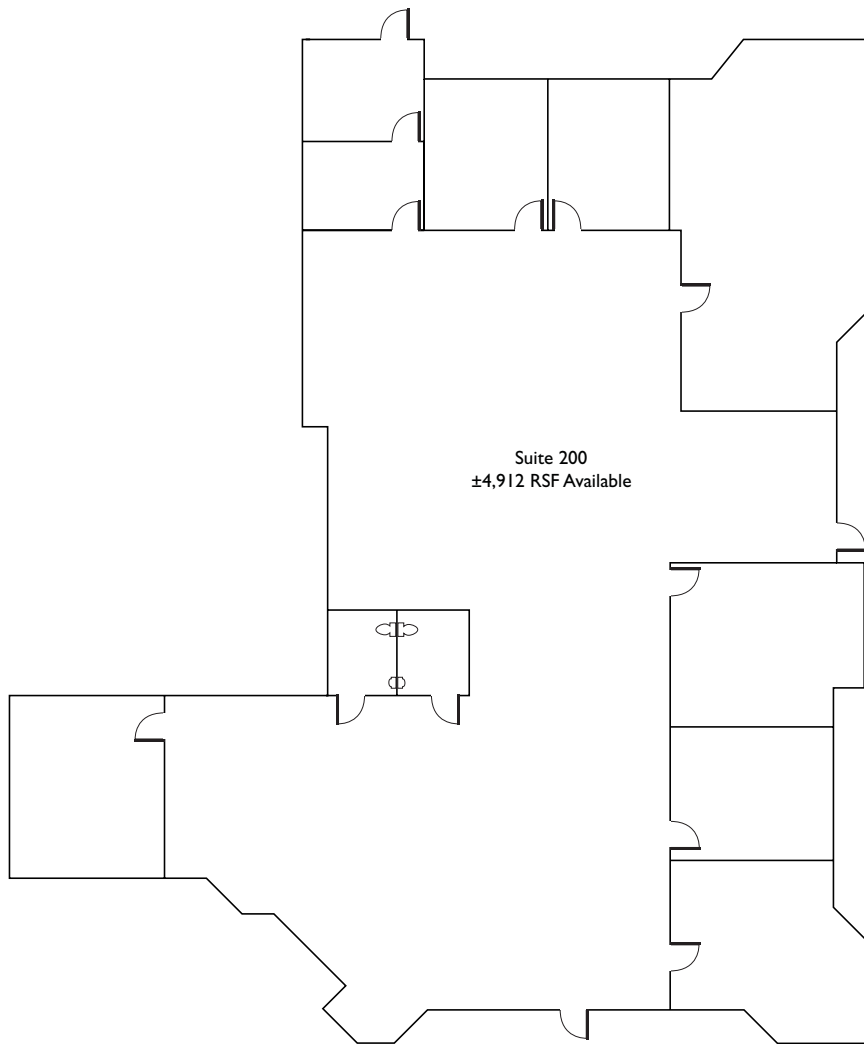
cnb@ccarey.com  
916.569.2311  
Lic. # 00928221

[www.ccarey.com](http://www.ccarey.com)

CORNISH & CAREY COMMERCIAL  
ONCOR INTERNATIONAL  
1601 RESPONSE ROAD, SUITE 160  
SACRAMENTO, CA 95815  
TEL: 916.920.4400  
FAX: 916.920.0854

The information contained herein has been given to us by the owner of the property or other sources we deem reliable. We have no reason to doubt its accuracy, but we do not guarantee it. All information should be verified prior to purchase or lease.

## Floorplan



09-2054•11/09

## Location Map



### Contact Exclusive Agents

#### Breanna Hegseth, LEED AP

bhegseth@ccarey.com

916.569.2341

Lic. # 01760300

#### Craig Brinitzer

cnb@ccarey.com

916.569.2311

Lic. # 00928221

[www.ccarey.com](http://www.ccarey.com)

CORNISH & CAREY COMMERCIAL  
ONCOR INTERNATIONAL  
1601 RESPONSE ROAD, SUITE 160  
SACRAMENTO, CA 95815  
TEL: 916.920.4400  
FAX: 916.920.0854